

Chimneyville Weavers and Spinners Guild

April 2024 Inside this Issue

PG. 1

- ❖ Message from the President

PG. 2

- ❖ CWSG Program Schedule
- ❖ Upcoming Events

PG. 3

- ❖ Mississippi Sheep Facts
- ❖ HGA Textiles and Tea Schedule

PG. 4

- ❖ Member Submissions
- ❖ Local Yarn Shop Day

PG. 5-7

- ❖ Member Submissions (Cont.)
- ❖ CWSG March Meeting Minutes
- ❖ CWSG Organization Information

Logo image adapted from image
graciously provided by Marcy Petrini at
<https://www.marcypetrini.com/>

Message from the President

From Alma Ellis, President

Dear CWSG Members,

Sheep to Shawl has always been a special event for our guild. The day showcases members' zeal for spinning, weaving and fiber arts, but it also celebrates beautiful spring days and families. Yes, we've had rain and cold a few times, but most of us remember the beautiful days, the people we shared our interests with and the fuzzy sheep. Lots of Mississippians see cattle regularly, but sheep, not so much.

On Saturday, April 6, we'll host the 2024 Sheep to Shawl at the Mississippi Agriculture and Forestry Museum from 10 a.m. until 3 p.m. at the Children's Barnyard. As always, expect to see spinning, weaving, sheep shearing and kids' fiber activities. My weather app says to expect a beautiful day.

Join us!

Alma



CWSG Program Schedule

Sheep to Shawl Demonstration, April 6th

In lieu of our regular meeting and program, we will be co-hosting Sheep To Shawl on April 6th at the Mississippi Ag Museum from 10:00am to 3:00pm.



Upcoming Events

January 30 – April 21, 2024	The Lauren Rogers Museum of Art in Laurel, MS is exhibiting Handstitched Worlds: The Cartography of Quilts organized by the American Folk Art Museum in New York. For more information go to https://www.lrma.org/exhibition/handstitched-worlds-the-cartography-of-quilts/
April 6	Our annual CWSG Sheep to Shawl Event will be held at the Mississippi Ag Museum on April 6 th from 10 am – 3 pm.
April 27th	Local Yarn Shop Day – this day is highlighted at brick & mortar stores with all day festivities, yarn and accessory sales, games and lots of door prizes and giveaways. The Pantone color for the season is a soft peach color and patterns with this shade as a focus are highlighted on multiple fiber sites. The Southern Needle will have a new independent yarn dyer introduced on this date.

CWSG Program Schedule

September 16, 2023

How I Did That

Presented by CWSG Members
Moderator Donna Peyton

October 21, 2023

Natural Dyeing with Cochineal

Presented by Marcy Petrini

November 18, 2023

Pendleton Woolen Mills

Presented by Beth Palmer

December 9, 2023

Christmas Party

January 6, 2024

Roc Day Activities

February 17, 2024

Wish I'd Known That

Presented by CWSG Members
Moderator Debbie Stringer

March 16, 2024

Spinning Art Yarns

Presented by Janet Lee

April 6, 2024

Sheep to Shawl (demonstration)

May 18, 2024

History of Textiles

Presented by Donna Peyton

Mississippi Sheep Facts

Submitted by Alma Ellis

With our annual Sheep to Shawl event approaching, I thought it would be fun to share the information below on Mississippi sheep adapted with permission from *Mississippi Farm Country*, a publication of the Mississippi Farm Bureau Federation, from the article "Farm Facts: Sheep," which appeared in the Winter 2023-24 issue. Pictures were taken by Terry Dwyer at Sheep to Shawl.

HGA Textiles and Tea

Each Tuesday at 4 pm (EST), HGA hosts a conversation with some of the most respected fiber artists in the field today. They are broadcast via Zoom and free to view and open to all. Full schedule at weavespindye.org

April 2
Christine Miller

sponsored by Melodie Usher & Pamela Bisson

April 9
Patsy Zawistoski

sponsored by Tempe Yarn & Fiber

April 16
Liz Gipson

sponsored by Weave A Real Peace

April 23
Demetrio Bautista Lazo

sponsored by Textile Arts Los Angeles

April 30
Kathy Monaghan

sponsored in memory of Kathy, an intrepid weaver

There are more than 5 million sheep in the U.S.

Mississippi is home to more than 740 sheep farms.

Contributing both food and fiber to the economy, sheep are an important part of Mississippi's agriculture industry.

Wool is used to make warm fabrics, socks, carpets and more.

One pound of wool can be spun into up to 10 miles of yarn



Member Submissions

Submitted by Various Members

Marcy Petrini's March blog post "The Fabric Determines the Structure" is now up on her web site at https://www.marcypetrini.com/marcy-s-blogs/373_blog-123-fabric-determines-structure

Representatives from our guild (Alma Ellis, Donna Peyton, Beverly Anglin, Sarah Pair, Elaine Gager, and Janet Lee) had a great time at Clinton's Art in the Park on March 23rd demonstrating spinning and weaving to all the attendees.



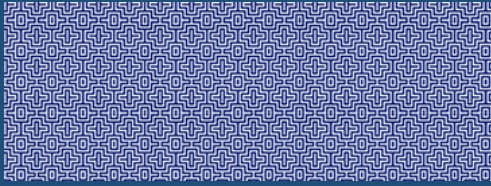
Jacqueline Dutsch recently finished her first tapestry project, a rug woven in the Navajo style. Pictured here is (1) the rug hanging in Senatobia, (2) a close-up of the rug, and (3) a picture of Jacqueline and her instructor Molly at Tierra Wools.



Local Yarn Shop Day:

Local Yarn Shop Day is April 27th – this day is highlighted at brick & mortar stores with all day festivities, yarn and accessory sales, games and lots of door prizes and giveaways. The Pantone color for the season is a soft peach color and patterns with this shade as a focus are highlighted on multiple fiber sites. The Southern Needle will have a new independent yarn dyer introduced on this date.

Beverly



Jeanne Marie assisted with a field trip at the Craft Center on Wednesday, March 27, with a group of second graders from Union County Schools. Here she is helping a student weave a personal tapestry. On these field trips, students learning about the Craftsmen's Guild, the Craft Center, and rotate through pottery, mosaic and weaving activities.



CWSG Meeting Minutes from March 16, 2024

Submitted by Jeanne Marie Peet

The March meeting of the CWSG was called to order by President Alma Ellis on Saturday, March 16, 2024, at 10 a.m. at the Madison Public Library in Madison, Mississippi. There were 15 members present, which met the requirement for a quorum.

Beverly Anglin moved and Nancy Hester seconded to approve today's agenda. Motion carried.

The minutes of the February 17, 2024, meeting, as published in the CWSG March 2024 newsletter, were presented for approval. Jacqueline Dutsch moved to approve the minutes as printed, and Janet Lee seconded. The minutes were approved by voice vote.

The Treasurer's Report was given by Heather Mitchell.

Because Sheep to Shawl will be held in place of the April meeting, the Board recommended the election of officers to be held at the March meeting. The Nominating Committee, appointed by President Alma Ellis, was composed of Beth Palmer and Judy Foster. Committee chairman Beth Palmer presented the slate of officers: Sarah Pair – Secretary, Gio Chinchar – Treasurer, Janet Lee – Librarian/Historian(re-election.) The floor was then opened for additional nominations. As no additional nominations were made, Marcy Petrini moved that the nominations close. Debbie Stringer seconded the motion. The motion carried and the

vote was held. (Seven absentee votes by email were also recorded into the vote count.) The vote was unanimous and the candidates were elected.

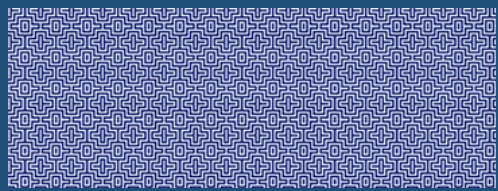
The Location Committee chairman Gio Chinchar presented recommendations concerning meeting locations for the 2024 - 2025 year (September 2024 – May 2025) at either the Madison Public Library or the William Waller Craft Center. The recommendation of the committee, composed of Gio Chinchar and Lynn Watkins, was to host meetings at the William Waller Craft Center with the understanding from the MS Craftsmen’s Guild that the CWSG would be given priority on regularly scheduled dates over other events in the Harborview Room or the Craftsman’s Library (if the Harborview Room is unavailable.) The CWSG would be responsible for setting up the meeting room (tables and chairs provided by the Craft Center) and cleaning up trash at the end of session (no need to return tables and chairs.) The location would be provided at no charge for meetings and for Sheep to Shawl. Honorariums would be welcomed. A motion was made by Beverly Anglin and seconded by Janet Lee to accept the recommendations of the committee to move back to the William Waller Craft Center for 2024 - 2025. The motion passed.

Janet Lee presented the Media Planning Committee report. The committee, composed of Janet, Beth Palmer, Beverly Anglin, Donna Peyton, and Morgan Bowser, recently met via Zoom to discuss utilization and coordination of Instagram and Facebook platforms. Strategies on how to provide valuable content and communication to the community in order to increase awareness of the CWSG were investigated. The committee is planning to present strategies for Facebook in Fall of 2024. Beth Palmer recommended that in the interim CWSG members could better publicize what we do by using the Like Page, Share posts, and Like posts on Facebook.

Sheep to Shawl will be held Saturday, April 6, from 10 a.m. to 3 p.m. at the Mississippi Agriculture and Forestry Museum. Fliers for the event were presented. The location on the Ag Museum grounds for the event will be the Pavilion, weather permitting. In case of inclement weather, we will utilize the Learning Center. We are still looking for sheep for the shearing portion of programming.

Study Group updates: The Spinning Study group has had an initial meeting. The Weaving Study Group is continuing to meet monthly to explore and discuss weave structures.

The Roc Day Program was successful. All items have been paid and deposited.



About Chimneyville

Weavers & Spinners Guild

CWSG brings together people who enjoy and want to learn more about weaving and spinning. Our guild is based in the Jackson, Mississippi area.

Officers

Each officer serves a two-year term on the CWSG board.

President: Alma Ellis

Vice President: Donna Peyton

Secretary: Jeanne Marie Peet

Treasurer: Heather Mitchell

Librarian/Historian: Janet Lee

Past President: Nancy Hester

Membership

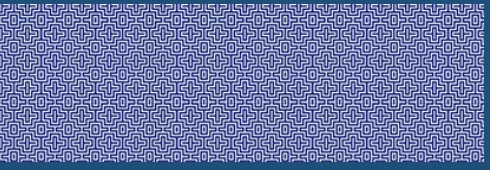
Membership is open to anyone with like interests. The annual membership fee is \$25. A membership form is available at <http://cvillewsg.com/> and click on “membership.” CWSG members may also join the CWSG Co-op, which is a member of the Craftsmen’s Guild of Mississippi and provides opportunities to sell original handwoven and handspun work through CGM’s shows and gallery.

Meetings/Events

CWSG normally meets on the third Saturday of the month, September through May. Meetings include a business session, program, and show-and-tell. We begin at 10 a.m. at the Madison City Library in Madison, Miss., unless otherwise noted. We also conduct public outreach activities such as weaving and spinning demonstrations and a springtime demonstration day known as Sheep to Shawl.

Newsletter

Please email newsletter content submissions to newsletter editor Janet Lee (jlemasters100@yahoo.com) by the first day of the month of publication. If you are sending a photo, please include caption information.



Art in the Park will be Saturday, March 23, 2024, from 10a.m. – 1 p.m. in Clinton, MS.

The Institute for Disability Studies at the University of Southern Mississippi has submitted a grant for a proposed project, Pathway Weavers, to teach weaving to young adults. If funded, Alma Ellis has been asked to teach the year-long project. The Craftmen’s Guild of Mississippi and CWSG have provided letters of support for the grant, which include shared meetings and tours of the Craft Center.

The Linen Shop in Gluckstadt has large boxes of sample fabrics available (first come first serve) for free.

Marcy Petrini noted that Jeanne Marie Peet’s placemats were highlighted in her article in SS&D magazine.

Janet Lee moved that the meeting be adjourned.

After the business meeting, members held a brief Show and Tell, followed by an informative program on Spinning Art Yarns presented by Janet Lee.